

High SPL SMD Piezoelectric Sounders for Automotive & Industrial/ Security



PKMCS1818E20A0-R1

Application

- Parking Assist System
- Power slide door
- Warning Alarm
- Electric key etc.



Features

➤ World's loudest volume for a SMD piezoelectric sounder

100dB (typ.) [2kHz, 12Vo-p square wave, 10cm]

➤ Stable electrical performance

Quite stable electrical performance after reflow soldering

➤ Small, thin and Lightweight

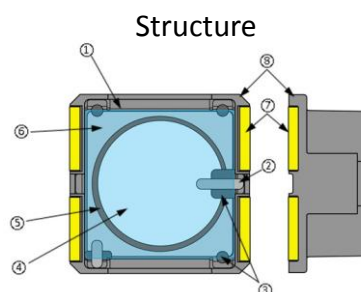
18×18×8mm, 950mg

➤ Low Power Consumption

Lower power consumption by higher impedance at operating frequency can preserve longer battery life (0.4mA@3Vo-p ※reference value)

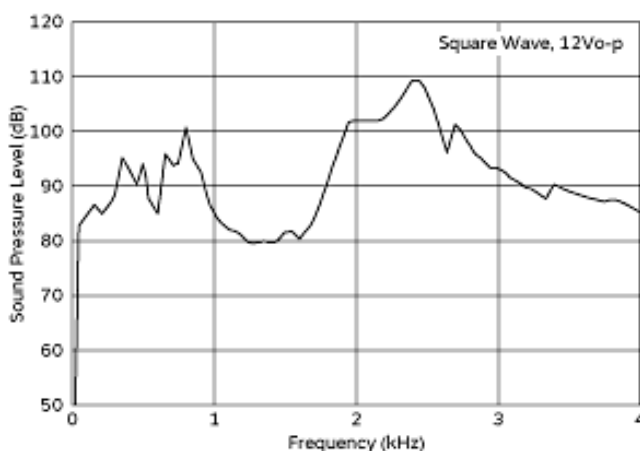
➤ No magnetic noise

There is no electrical noise because of no magnet and/or coil in structure.



①	Insulating Adhesive
②	Conductive Adhesive
③	Insulating Adhesive
④	Electrode
⑤	Ceramic Element
⑥	Metal Plate
⑦	Terminal
⑧	Case

SPL-Frequency Characteristics (Typical Data)



Specifications

Part Number	PKMCS1818E20A0-R1
Frequency	2.0kHz
Sound Pressure Level	100dB (typ.)
Measurement Condition	12Vo-p, square wave, 10cm
Maximum input voltage	18.0Vo-p [with polarity]
Operating Temperature Range	-40 to 105 °C
Storage Temperature Range	-40 to 105 °C
Drive Type	External Drive

*Please refer to below link or QR code for more details

PKMCS1818E20A0-R1

<http://www.murata.com/en-global/products/productdetail.aspx?cate=cgsubSounders&partno=PKMCS1818E20A0-R1>



"my Murata" Sound Components site Exclusive Contents

<https://my.murata.com/en/web/sound/members/mymurataexclusivecontentslist>



Play Sound Comparison

http://www.murata.com/en-global/products/sound/sounder/play?intcid5=com_xxx_xxx_cm_n_hd_xxx



Dimension, Standard Land Pattern Dimensions

(in mm, Tol.: ±0.2mm)

