

SFSKA4M50CF00-R3

Discontinued

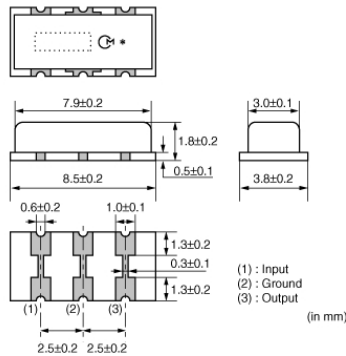
RoHS

REACH

Applications

Unsuitable Applications	Please be sure to read and comply with these "Precautions for use."
Specific Applications	Consumer equipment Please refer to Our Website and specifications, etc. for information about the performance, functions, quality, management, and safety required for the above applications, and use Products after confirming the performance and reliability of the actual Product.

Appearance & Shape



Packaging Information

Packaging	Specifications	Standard Packing Quantity
-R3	330mm Embossed Tape	3000

Features

SMD ceramic filter SFSKA_CF is a small and thin SMD filter sealed with a metal cap. Recommended for LCD-TVs, and small and thin tuners.

Features

1. High attenuation outside bandwidth.
2. Small and thin package.
3. Reflow-solderable.

Attention

1. This datasheet is downloaded from the website of Murata Manufacturing Co., Ltd. Therefore, its specifications are subject to change or our products in it may be discontinued without advance notice. Please check with our sales representatives or product engineers before ordering.
2. This datasheet has only typical specifications because there is no space for detailed specifications. Therefore, please review our product specifications or consult the approval sheet for product specifications before ordering.

SFSKA4M50CF00-R3



Specifications

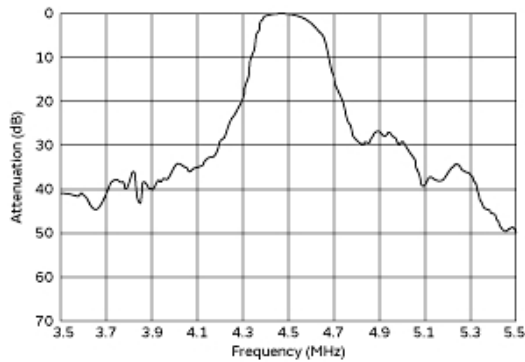
Operating Temperature Range	-20°C to 80°C
Shape	SMD
Elements	2
Center Frequency	4.500MHz
Nominal Center Value	Yes
3dB Bandwidth	$f_n \pm 60 \text{kHzmin.}$
Stop Bandwidth	600kHz
Spurious Attenuation	20dB[within 0 to f_n]
Insertion Loss	6.0dBmax.
Input/Output Impedance	1000Ω
Mass	137mg

Attention

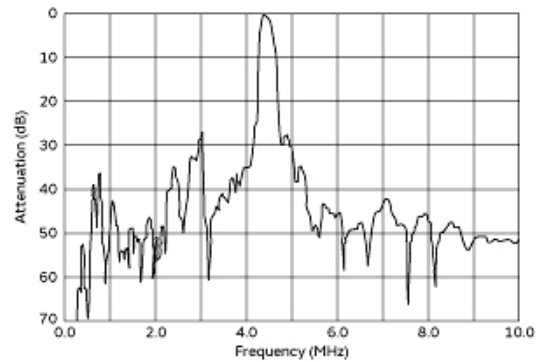
- 1.This datasheet is downloaded from the website of Murata Manufacturing Co., Ltd. Therefore, it's specifications are subject to change or our products in it may be discontinued without advance notice. Please check with our sales representatives or product engineers before ordering.
- 2.This datasheet has only typical specifications because there is no space for detailed specifications.
Therefore, please review our product specifications or consult the approval sheet for product specifications before ordering.

SFSKA4M50CF00-R3

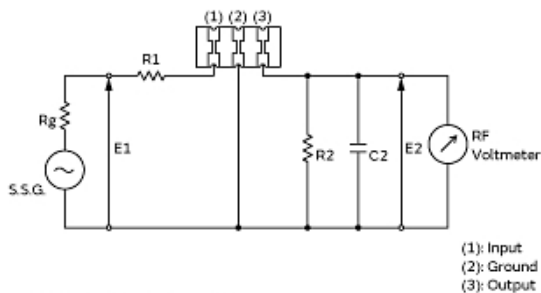
Product Data



Frequency Characteristics



Spurious Response



$R1 + Rg = R2 = 1000\Omega \pm 5\%$, $Rg = 50\Omega$
 $C2 = 10\text{pF}$ (Including stray capacitance and Input capacitance of RF Voltmeter)
 E1: S.S.G. Output voltage

Measurement Circuit

Attention

1. This datasheet is downloaded from the website of Murata Manufacturing Co., Ltd. Therefore, its specifications are subject to change or our products in it may be discontinued without advance notice. Please check with our sales representatives or product engineers before ordering.
2. This datasheet has only typical specifications because there is no space for detailed specifications. Therefore, please review our product specifications or consult the approval sheet for product specifications before ordering.