

PKM24SPH3805

Discontinued

RoHS

REACH

Applications

| | |
|-------------------------|--|
| Unsuitable Applications | Please be sure to read and comply with these "Precautions for use." |
| Specific Applications | Consumer equipment, Industrial Equipment Please refer to Our Website and specifications, etc. for information about the performance, functions, quality, management, and safety required for the above applications, and use Products after confirming the performance and reliability of the actual Product. |

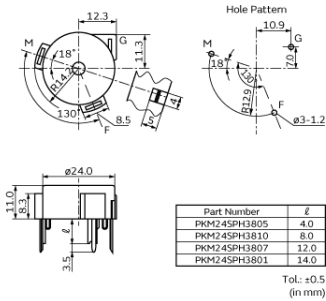
Packaging Information

| Packaging | Specifications | Standard Packing Quantity |
|-----------|----------------|---------------------------|
| - | Bulk | 360 |

Features

Piezoelectric sounder self drive type requires only simple circuit and DC power supply. Since this type uses resonant system, it is also available for alarms which need large sound volume.

Appearance & Shape



Attention

- 1.This datasheet is downloaded from the website of Murata Manufacturing Co., Ltd. Therefore, it's specifications are subject to change or our products in it may be discontinued without advance notice. Please check with our sales representatives or product engineers before ordering.
- 2.This datasheet has only typical specifications because there is no space for detailed specifications.
Therefore, please review our product specifications or consult the approval sheet for product specifications before ordering.

PKM24SPH3805



Specifications

| | |
|--|-------------------|
| Oscillation circuits | Not built-in |
| Size | φ24.0×11.0 mm |
| Frequency | 3.8kHz |
| Sound Pressure Level | 90dB (min.) |
| Measure Condition of Sound Pressure Level | [12Vdc, 10cm] |
| Oscillating Frequency | 3.8kHz |
| Measure Condition of Oscillation Frequency | [12Vdc] |
| Current Consumption(max.) | 12mA |
| Measure Condition of Current Consumption | [12Vdc] |
| Maximum input voltage | 3Vdc to 20Vdc |
| Operating Temperature Range | -20°C to 70°C |
| Storage Temperature Range | -30°C to 80°C |
| Shape | Lead |
| Lead Shape | Pin type |
| Lead length | Lead length:4.0mm |
| Drive Type | Self Drive |
| EIAJ Part Number | PS-RP3-C24-38 |
| Mass | 3712mg |

Attention

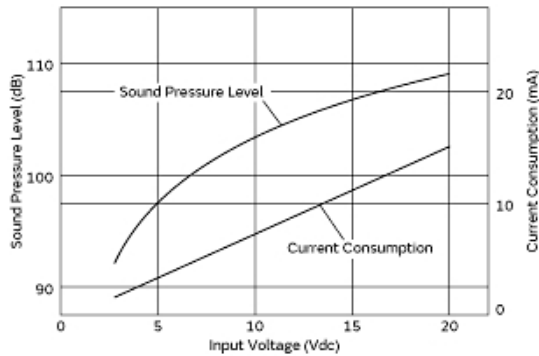
1.This datasheet is downloaded from the website of Murata Manufacturing Co., Ltd. Therefore, it's specifications are subject to change or our products in it may be discontinued without advance notice. Please check with our sales representatives or product engineers before ordering.

2.This datasheet has only typical specifications because there is no space for detailed specifications.

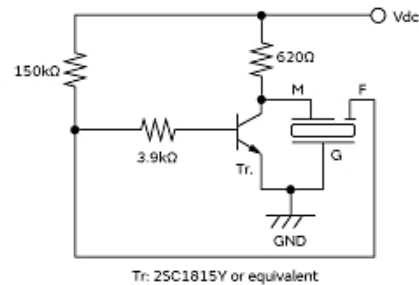
Therefore, please review our product specifications or consult the approval sheet for product specifications before ordering.

PKM24SPH3805

Product Data



Voltage Characteristics



Recommended Circuit

Attention

1.This datasheet is downloaded from the website of Murata Manufacturing Co., Ltd. Therefore, it's specifications are subject to change or our products in it may be discontinued without advance notice. Please check with our sales representatives or product engineers before ordering.

2.This datasheet has only typical specifications because there is no space for detailed specifications.

Therefore, please review our product specifications or consult the approval sheet for product specifications before ordering.