

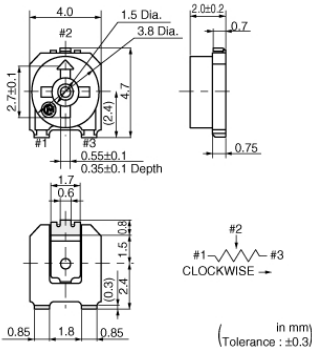
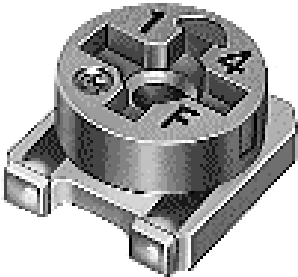
# PVM4A502C01B00

Discontinued

RoHS

REACH

## Appearance & Shape



## Features

1. Sealed construction protects the interior from dust and liquid, which achieves stable performance.
2. Available for flow and reflow soldering methods while maintaining unique sealed construction.
3. Simple construction of 3-piece parts achieves high reliability.
4. Large diameter slot of rotor improves driver insertion.
5. Available for cleaning after soldering.

## Packaging Information

Packaging	Specifications	Standard Packing Quantity
B00	Bulk(Bag)	500

**Attention**

1.This datasheet is downloaded from the website of Murata Manufacturing Co., Ltd. Therefore, it's specifications are subject to change or our products in it may be discontinued without advance notice. Please check with our sales representatives or product engineers before ordering.

2.This datasheet has only typical specifications because there is no space for detailed specifications.

Therefore, please review our product specifications or consult the approval sheet for product specifications before ordering.

# PVM4A502C01B00



## Specifications

Power Rating	0.1W
Shape	SMD
Maximum Working Voltage	50Vdc
Adjustment Direction	Top
Size	4mm
Auto Adjustment	Yes
Number of Turns (Effective Rotation Angle)	1(240°±10°)
Mechanical Rotation Angle	Endless
Total Resistance Value	5kΩ
Total Resistance Value Tolerance	±25%
Temperature Coefficient of Resistance	±250ppm/°C
Resistance Taper	B (Linear)
Contact Resistance Variation	3% max. of nominal total resistance value
Residual Resistance	2% max. of nominal total resistance value
Soldering Method	Reflow,Soldering Iron
Torque	2.0 to 24.5mN · m
Measure Condition of RatedPower	70°C
Operating Temperature Range	-55°C to 125°C
Mass	0.08g

### Attention

1.This datasheet is downloaded from the website of Murata Manufacturing Co., Ltd. Therefore, it's specifications are subject to change or our products in it may be discontinued without advance notice. Please check with our sales representatives or product engineers before ordering.

2.This datasheet has only typical specifications because there is no space for detailed specifications.

Therefore, please review our product specifications or consult the approval sheet for product specifications before ordering.

# PVM4A502C01B00



## Product Data



## Constructions

### Attention

1.This datasheet is downloaded from the website of Murata Manufacturing Co., Ltd. Therefore, it's specifications are subject to change or our products in it may be discontinued without advance notice. Please check with our sales representatives or product engineers before ordering.

2.This datasheet has only typical specifications because there is no space for detailed specifications.

Therefore, please review our product specifications or consult the approval sheet for product specifications before ordering.